

The SAS System

The REG Procedure

Model: MODEL1

Dependent Variable: topspeed

Number of Observations Read	21
Number of Observations Used	21

Analysis of Variance					
Source	DF	Sum of Squares	Mean Square	F Value	Pr > F
Model	5	18248	3649.50958	119.58	<.0001
Error	15	457.79314	30.51954		
Corrected Total	20	18705			

Root MSE	5.52445	R-Square	0.9755
Dependent Mean	169.91333	Adj R-Sq	0.9674
Coeff Var	3.25133		

Parameter Estimates					
Variable	DF	Parameter Estimate	Standard Error	t Value	Pr > t
Intercept	1	182.87290	1.70630	107.17	<.0001
cbank	1	1.47430	0.15158	9.73	<.0001
clength	1	43.85323	2.05382	21.35	<.0001
cbl	1	0.04550	0.17616	0.26	0.7997
cbank2	1	-0.01405	0.02155	-0.65	0.5241
clength2	1	-30.76135	4.03282	-7.63	<.0001

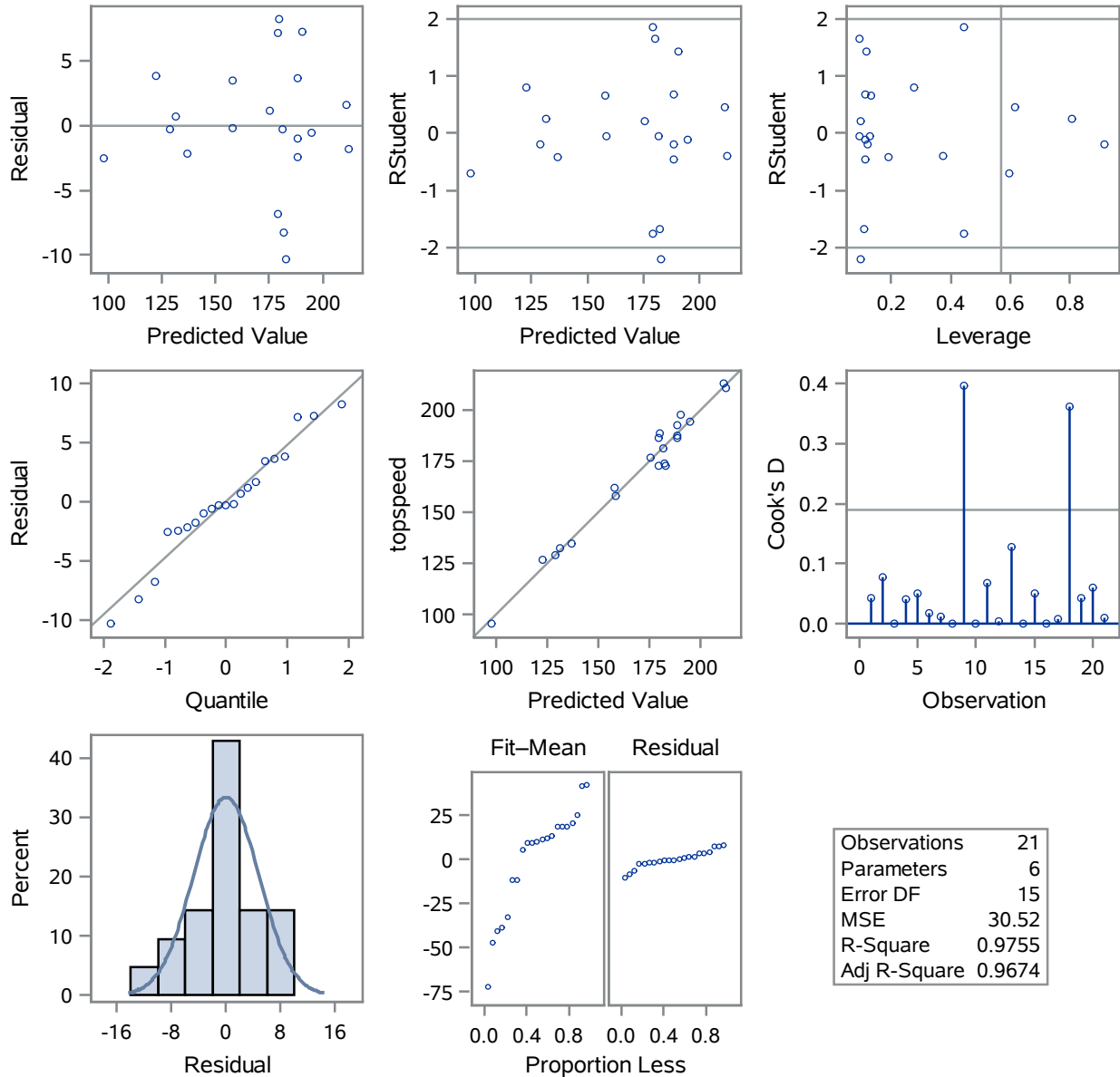
The SAS System

The REG Procedure

Model: MODEL1

Dependent Variable: topspeed

Fit Diagnostics for topspeed

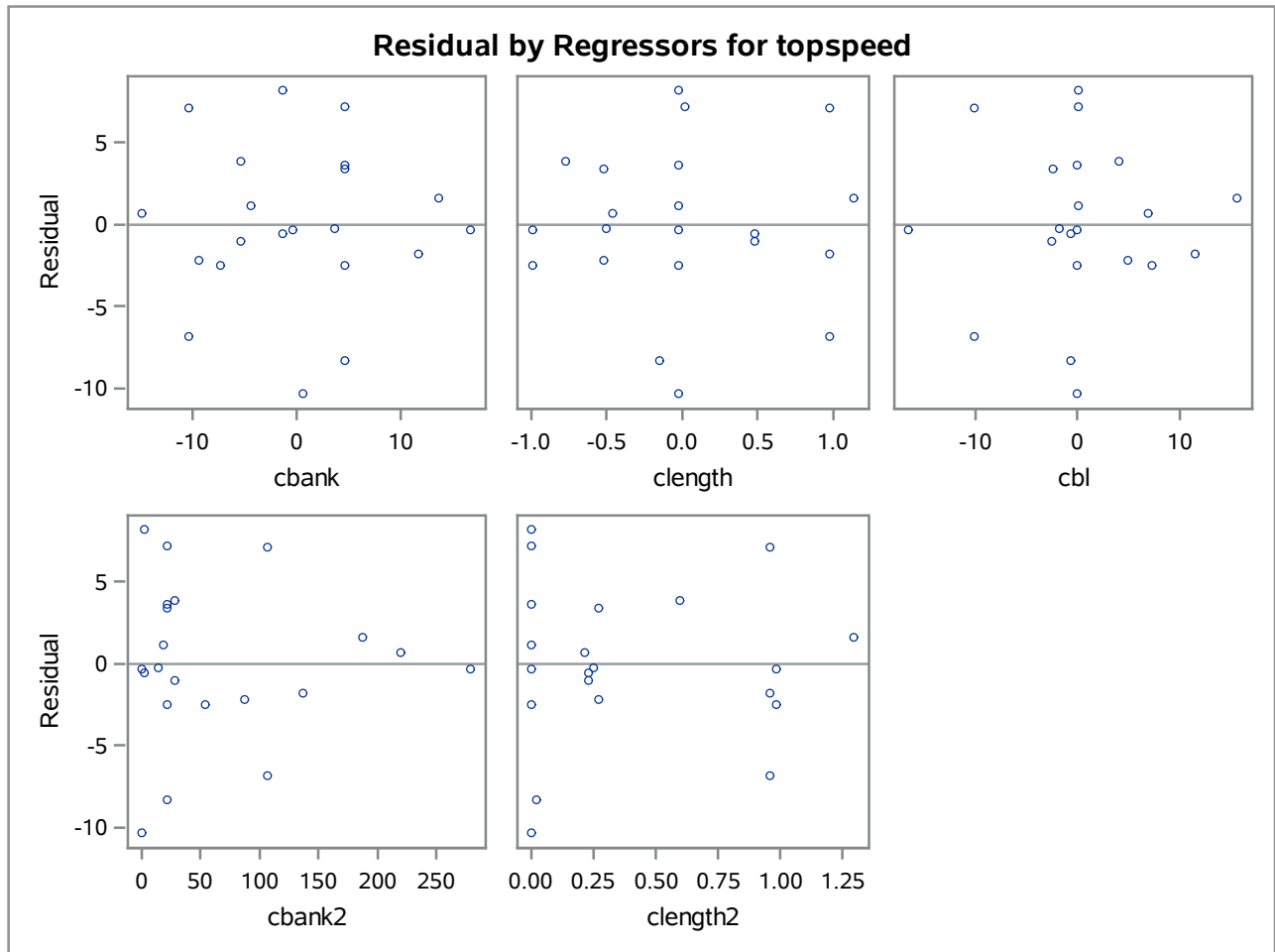


The SAS System

The REG Procedure

Model: MODEL1

Dependent Variable: topspeed



The SAS System

The REG Procedure

Model: MODEL1

Dependent Variable: topspeed

Number of Observations Read	21
Number of Observations Used	21

Analysis of Variance					
Source	DF	Sum of Squares	Mean Square	F Value	Pr > F
Model	3	18232	6077.16984	218.04	<.0001
Error	17	473.83150	27.87244		
Corrected Total	20	18705			

Root MSE	5.27944	R-Square	0.9747
Dependent Mean	169.91333	Adj R-Sq	0.9702
Coeff Var	3.10713		

Parameter Estimates					
Variable	DF	Parameter Estimate	Standard Error	t Value	Pr > t
Intercept	1	182.65180	1.59723	114.36	<.0001
cbank	1	1.46392	0.14373	10.19	<.0001
clength	1	44.17045	1.91763	23.03	<.0001
clength2	1	-32.52179	2.82536	-11.51	<.0001

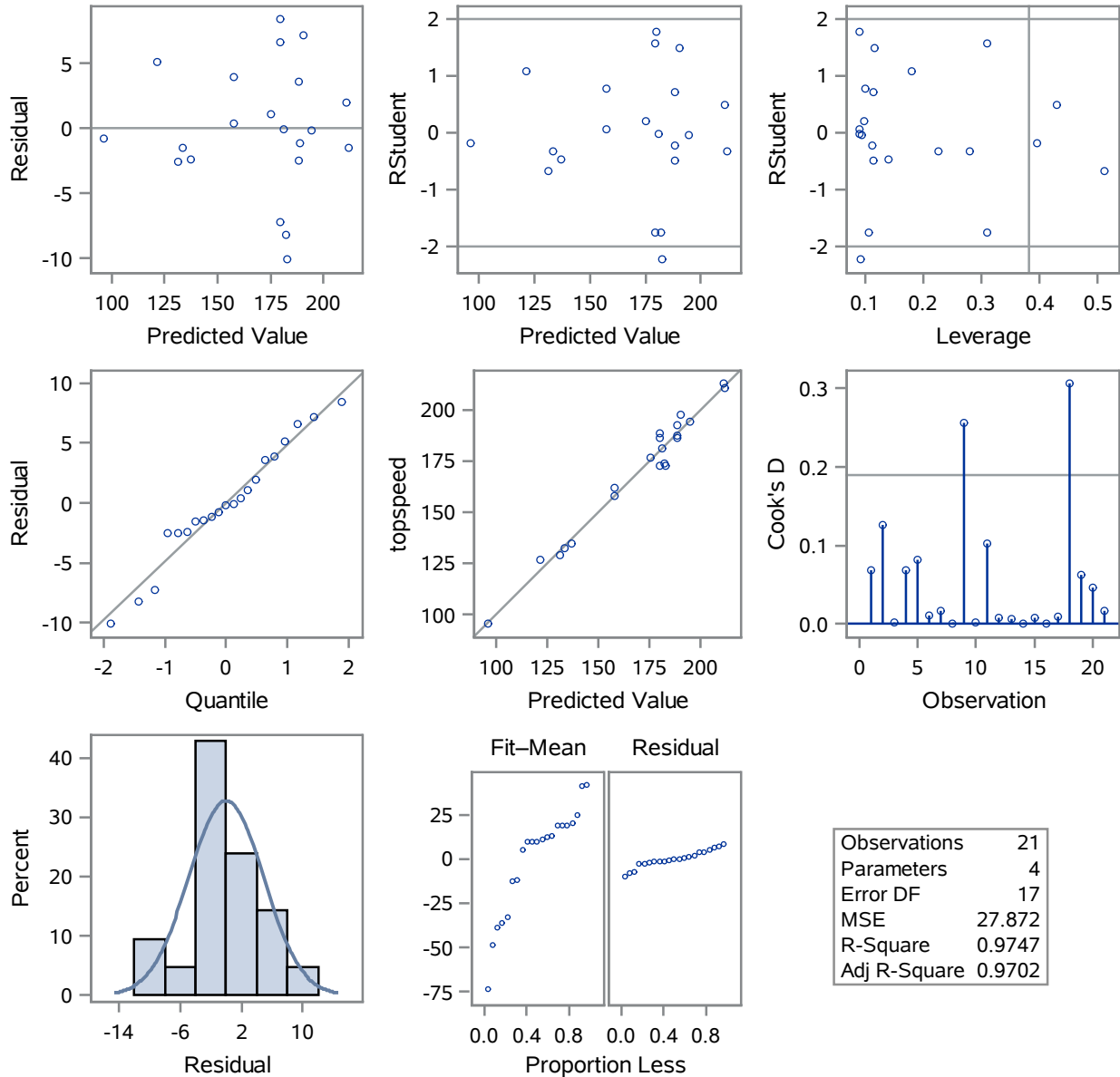
The SAS System

The REG Procedure

Model: MODEL1

Dependent Variable: topspeed

Fit Diagnostics for topspeed



The SAS System

The REG Procedure

Model: MODEL1

Dependent Variable: topspeed

